



ABC PLAYGROUND SAFETY

2235 West 243rd, Lomita, CA 90717
 Phone: (310) 880-6126 FAX: (310) 325-502
 Email: info@abcplaygroundsafety.com
www.abcplaygroundsafety.com

**Playing Surface Impact Test Report
 Artificial Playing Surface**

Grossmont High School, San Diego, Ca.

Test Date: February 26, 2003

Report Date: February 26, 2003

Test Methods: ASTM F 1936: Standard Specification for Shock-Absorbing properties of North America Football Field Playing Systems as Measured in the Field. ASTM F 355: Standard Test Method for Shock-Absorbing Properties of Playing Surface Systems and Materials, Procedure A. Accelerometer last calibrated February 25, 2003. Tests performed by Jeff Davis.

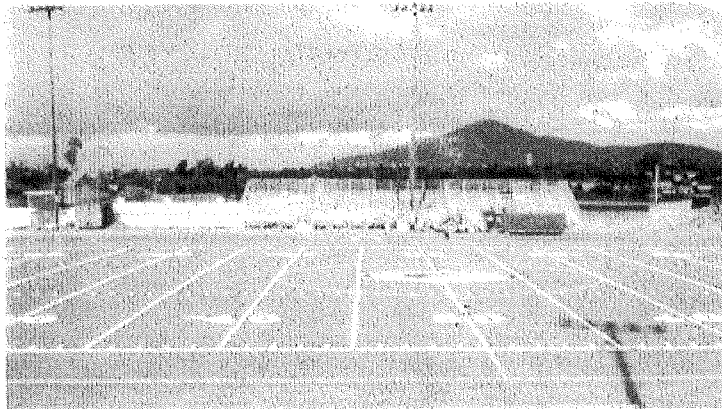
Surface Description In-filled artificial turf system in new condition. Center field logo painted heavily over large area creating a crusty surface.

Weather Conditions

February 26, 2003	°F	°C
Mean Temperature	65.7°F	18.5°C
Max Temperature	75.2°F	24.0°C
Min Temperature	55.4°F	13.0°C
Wind (mph / km/h)	5.6	9.1
Dew Point	56.8°F	13.8°C
Relative Humidity	74%	

Summary of Results

Field Average G max	121
Field Maximum G max	132
Site maximum G max	145
Average Fill Depth (in)	1.7"



Test results reported herein reflect the conditions of the tested field at the time of testing and at the temperature(s) reported under the stated test conditions, all point met the requirement of <200 G max when tested in accordance with ASTM F1936



SPORTS SURFACE IMPACT TEST REPORT

Grossmont High School

Test date: March 1, 2003

Report date: March 2, 2003

Field Description and Condition :

Football / Soccer
New

Weather Conditions:

Temperature : 50 °F
Drizzle to Partly Cloudy, Cool

Humidity : 59%

Test Method:

ASTM F 355 : Standard Test Method for Shock-Absorbing Properties of Playing Surface Systems and Materials, Procedure A.

ASTM F 1936: Standard Specification for Shock-Absorbing Properties of North American Football Field Playing Systems as Measured in the Field.

Summary of Results:

	gmax	HIC
Point 1 — Goal Line, End A, Center Field	112.9	308.2
New		
Point 2 — 10 Yard Line, End A, and 1/4 the distance from side line C to center field	93.1	220.1
New		
Point 3 — 25 Yard Line, End A, and 1/2 the distance from side line C to center field	97.3	247.6
New		
Point 4 — Center field	105.9	280.7
New		
Point 5 — 25 Yard Line, End B, and 1/4 the distance from side line D to center field	102.2	269.7
New		
Point 6 — 12 Yard Line, End B, and Center of Field	115.3	324.7
New		

Conclusion:

Under the test conditions reported above, all test points met the requirement of < 200 average G max when tested in accordance with specification F1936.

Test results reported herein reflect the conditions of the tested field at the time of testing and at the temperature(s) reported.

Jeff Davis

File: Grossmont H.S., El Caion, Ca., 355