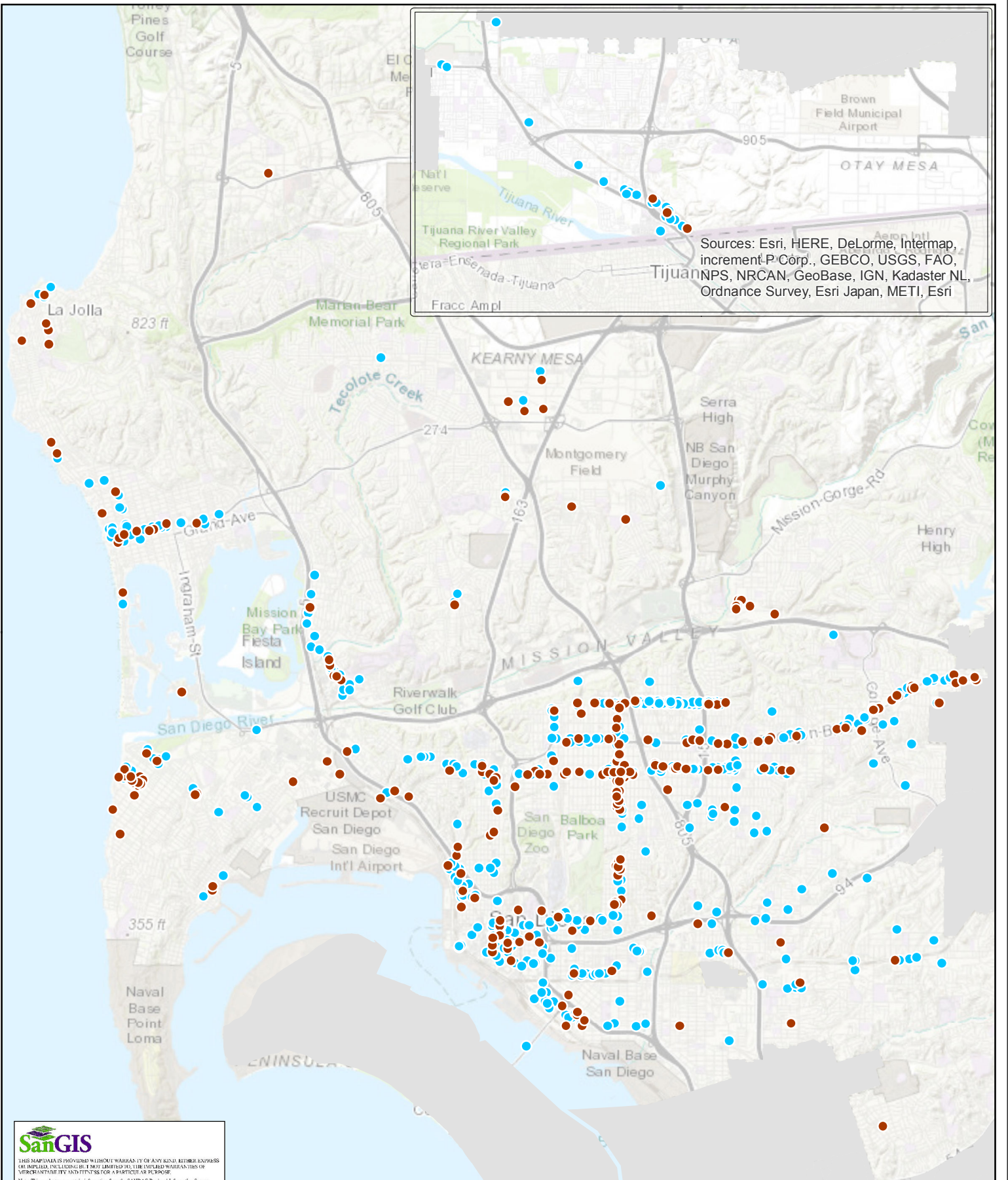


City of San Diego - Storefront Improvement Project Locations

FY99 - FY10

FY11 - FY17



Sources: Esri, HERE, DeLorme, Intermap, increment P Corp., GEBCO, USGS, FAO, NPS, NRCAN, GeoBase, IGN, Kadaster NL, Ordnance Survey, Esri Japan, METI, Esri

Sources: Esri, HERE, DeLorme, Intermap, increment P Corp., GEBCO, USGS, FAO, NPS, NRCAN, GeoBase, IGN, Kadaster NL, Ordnance Survey, Esri Japan, METI, Esri China (Hong Kong), swisstopo, MapmyIndia, © OpenStreetMap contributors, and the GIS User Community

SanGIS

THIS MAP/MAPPAIS PROVIDED WITHOUT WARRANTY OF ANY KIND, EITHER EXPRESS OR IMPLIED, INCLUDING BUT NOT LIMITED TO, THE IMPLIED WARRANTIES OF MERCHANTABILITY AND FITNESS FOR A PARTICULAR PURPOSE.

Note: This product may contain information from the SANDAG Regional Information System which cannot be reproduced without the written permission of SANDAG. This product may contain information reproduced with permission granted by BRAND MCNALLY & COMPANY, INC. as SanGIS.

This map is copyrighted by BRAND MCNALLY & COMPANY, INC. No part of this map or any data hereon, whether for general use or resale, without the prior, written permission of BRAND MCNALLY & COMPANY, INC.

Copyright SanGIS 2009 - All Rights Reserved.
 For more information please contact us at: http://www.sangis.org/Help_Net/02.htm

